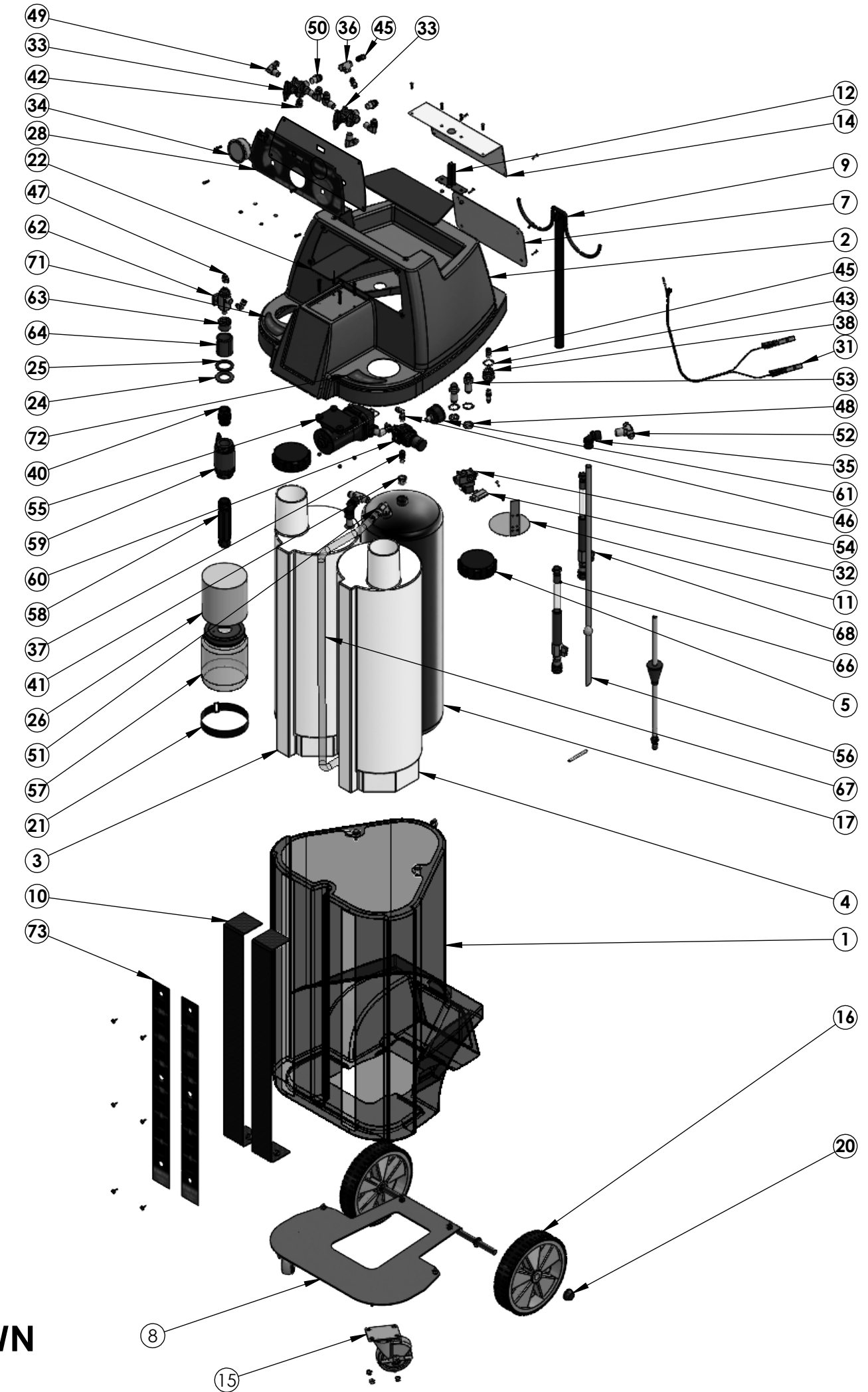


ITEM NO.	PART NUMBER	DESCRIPTION	QTY.	ITEM NO.	PART NUMBER	DESCRIPTION	QTY.
1	941283	C-VAC CONSOLE PP226	1	46	945016	5/16 TUBE X 1/4 NPT ELBOW W169PLPE-5-4	1
2	941431	TOP-VACFILL3 RED	1	47	40200356	5/16 TUBE X 1/8 NPT ELBOW W169PLP3 5-2	2
3	941432	TANK-VACFILL3 NEW LH NATURAL	1	48	940113	NUT/BULKHEAD/8WLN/	2
4	941433	TANK-VACFILL3 NEW RH NATURAL	1	49	940114	90 JIC ELBOW	5
5	942113	TANK CAP	2	50	940124	MALE CONNECTOR 3/8NPT 1/2JIC	2
6	P940850	PLATE - SERIAL NUMBER - ATF3	1	51	941109	ELBOW 1/2 NPT X 1/2 JIC	3
7	P941317	LOWER SERVICE PANEL-BLACK-CVAC	1	52	941326	TEE 1/2 FPT X 1/2 JIC X 1/2 JIC	2
8	941318	CASTER BRKT-BLACK-CVAC	1	53	941337	BULKHEAD FITTING 1/2JIC 5325X8	2
9	P941321	SHEPHERD HOOK WELDMENT-BLK-CVAC	1	54	941276	579 VALVE-8MM PORTS-12VDC COILS	1
10	P941370	BRACKET-BLK CVAC CONSOLE REIN	2	55	941285	C-VAC INTRNL PUMP #04400510B	1
11	P941437	BOTTLE HOLD PLATE-BLK VACFILL3	1	56	941307	ALUM TUBE 5/8 X 29.5 MITER 1 END	2
12	P941452	VACFILL3PLUS SHEPHERD HOOK MOUNT	1	57	941424	BOTTLE-PLASTIC OVRFLO	1
13	P941453	CONTROL PANEL-BLK VF3PLUS	1	58	941426	PIPE NIPPLE-1 X 6 LONG	1
14	P941454	UPPER SERV PANEL BLK VF3PLUS	1	59	941427	BALL VALVE-1FPT PVC	1
15	R942118	CASTER 4 W/BRAKE ATFX	2	60	941469	REGULATOR-VACFILL 05R113AD	1
16	941300	WHEEL 10 X 2-5/8 X 2-3/16 C-VAC	2	61	941470	GAUGE 0-200PSI MINIATURE	1
17	941434	TANK-USED FLUID STEEL VACFILL3	1	62	40200355	GENERATOR-VACUUM	1
18	501046	NUT 5/16-18, PAL PUSH	2	63	40200396	REDUCER BUSHING PVC 1 X 1/4	1
19	941240	GROMMET .56ID .18 X .81 GROOVE	2	64	40200397	1" NPT FEMALE PVC PIPE FITTING	1
20	941299	PUSH NUT 5/8 BLACK	2	65	40200854	PUMP PORT KIT - 1/2" BARB ELBOW - SET OF 2	1
21	941425	STRAP-VELCRO BOTTLE HOLDER	1	66	941346	SERVICE HOSE (RED)	1
22	941439	VINYL MAT-SMALL FRONT CAVITY	1	67	941450	INTERNAL HOSE SET-VACFILL3	1
23	941440	VINYL MAT-LARGE REAR CAVITY	1	68	941467	SERVICE HOSE (BLACK) - CVAC UPDATE	1
24	941990BS	EPDM WASHER 2.07"ODX1.187"X0.134"THICK	1	69	R940557	TUBE 5/16 POLY PER FOOT	1
25	941991BS	EPDM WASHER 1.375" ODX0.937"IDX0.125"THICK	1	70	R942142	HOSE CLAMP 3/8 SCREW TYPE	4
26	40201007	FOAM 5" DIA X 5" THICK 1533 FOAM	1	71	940988	LABEL GREEN FLUID TANK - CVAC	1
27	R940761	GROMMET 5/8 ID DC 5156	1	72	940989	LABEL RED FLUID TANK - CVAC	1
28	941449	OVERLAY-CONTROL PANEL VACFILL3	1	73	R941306	MEASURING STRIP STICKER C-VAC	2
29	40200819	VACFILL EQUIPMENT LIST OVERLAY	1				
30	941342	3WAY SWITCH - CVAC MACHINE	1				
31	941396W	BATTERY CABLE ASSM CVAC WARRANTY 18FT	1				
32	941448	WIRE HARNESS-INVEN-VACFILL3PLUS	1				
33	941277	4WAY VALVE ANDERSON B 200CN-12	2				
34	941438	2.5 PANEL MNT GAUGE 30-0-160	1				
35	941226	ELBOW PLASTIC FEM 1/2 NPT X 5/8 TU	2				
36	941324	TEE 1/4 FEMALE PIPE	1				
37	941328	NIPPLE 1,4NPT 1/4NPT 216P-4	1				
38	941334	BULKHEAD CON 1/4FPT 207ACBH-4	1				
39	941335	AIR NIPPLE 1/4NPT H2C	1				
40	941428	PIPE NIPPLE-1 X SHORT	1				
41	941446	REDUCER-1/2MPT X 1/4FPT 209P-8-4	1				
42	941451	PLUG-3,8MPT	1				
43	R941367	3/4 INTERNAL TOOTH LOCK WASHER	3				
44	40201378	HEX DRIVE PLUG - 1/4 NPT - SS	1				
45	941332	CONN 1/4NPT 5/16PUSH W68PL-5-4	3				



VACFILL3PLUS PARTS BREAKDOWN