

8

7

6

5

4

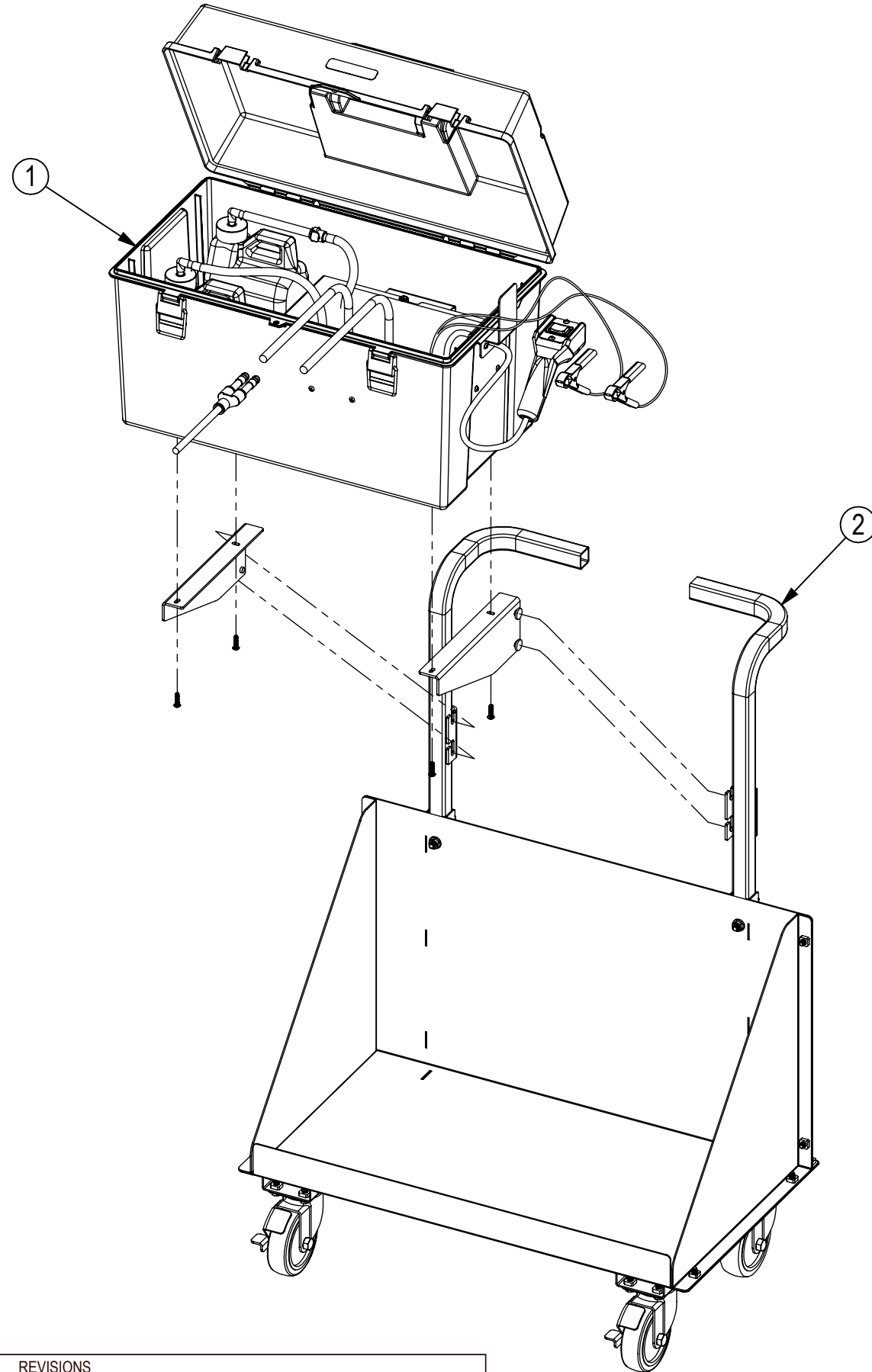
3

2

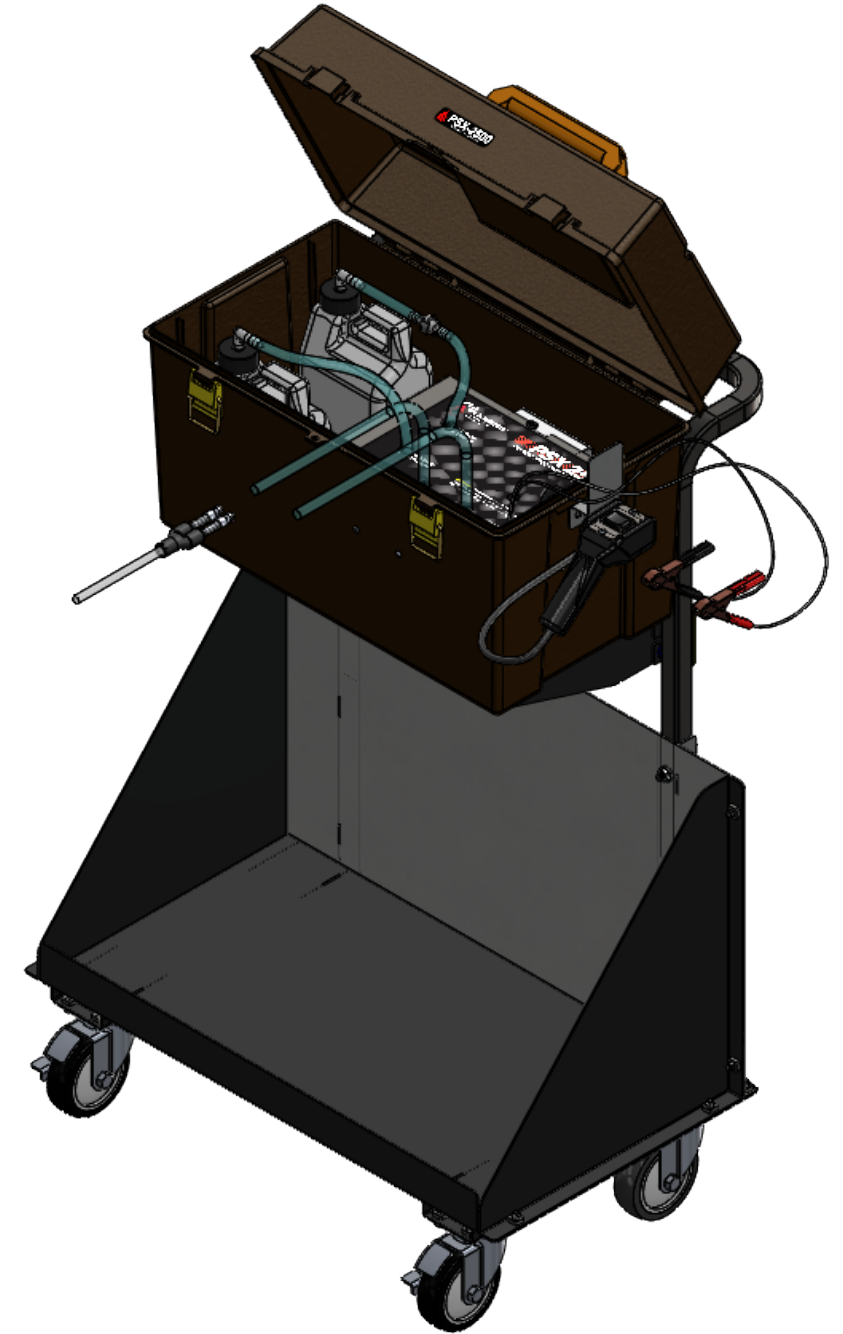
1

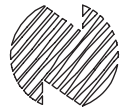
NOTES:

- 1. SURFACE AREA: 8686.358 SQ IN
- 2. FLAT AREA: SQ IN
- 3. ALL BENDS ARE 90° WITH RADII UNLESS OTHERWISE SPECIFIED.
- 4. EST WELD : X"
- 5. ROUTING NOTES:
 - OP -
 - OP -
 - OP -
 - OP -
 - OP -
 - OP -
 - OP -
 - OP -
 - OP -
 - OP -



ITEM NO.	PART NUMBER	DESCRIPTION	
1	PSX-2500	POWER STEERING FLUID CHANGER	1
2	944087W	HD CART-PSX/DFX SERV ORDER NUM	1



UNLESS OTHERWISE SPECIFIED DIMENSIONS ARE IN INCHES GENERAL TOLERANCES: FRACTIONAL: ± 1/16 ANGULAR: ± 1° X.XX ± .03 X.XXX ± .015 INTERPRET GEOMETRIC TOLERANCING PER: ASME Y14.5	THE INFORMATION CONTAINED IN THIS DRAWING IS THE SOLE PROPERTY OF NORCO INDUSTRIES, INC. ANY REPRODUCTION IN PART OR AS A WHOLE WITHOUT THE WRITTEN PERMISSION OF NORCO INDUSTRIES, INC IS PROHIBITED.	DRAWN BY: AKG	DRAWN DATE:	 NORCO INDUSTRIES
		CHECKED BY:	CHECK DATE:	
MATERIAL SPEC		RLS APPR BY: --	RLS DATE: --	SHEET SIZE: B SHEET 1 OF 2
SEE BOM		MASS: 53.893 lbm	FINISH:	
DESCRIPTION	POWER STEERING EXCH W/CART	PART NUMBER	PSX2500	REV
				-

REVISIONS				
REV.	DATE	DESCRIPTION	PPCO#	APPROVED

8

7

6

5

4

3

2

1

4

3

2

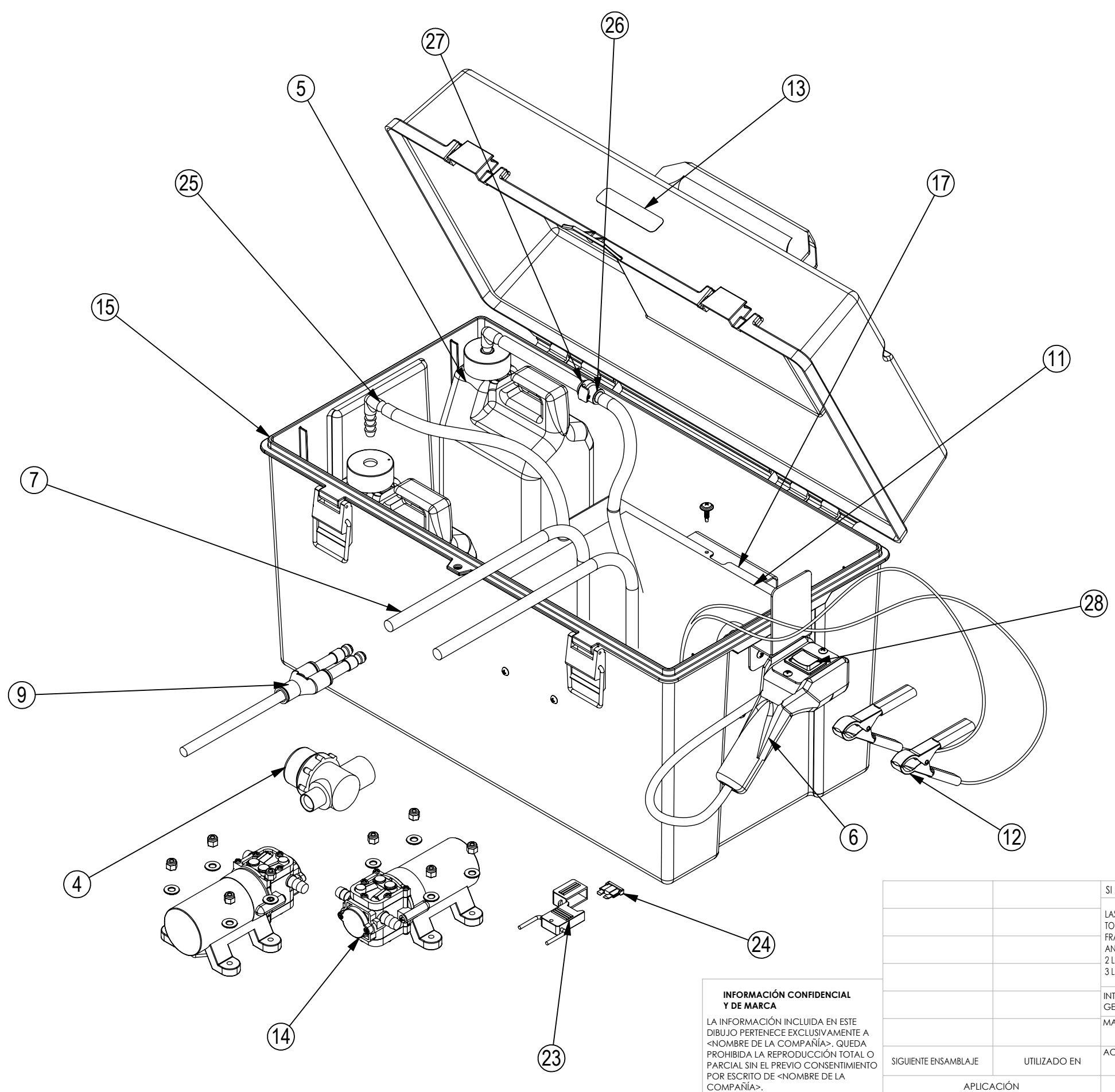
1

B

B

A

A



ITEM NO.	PART NO.	DESCRIPTION	QTY.
1	940510	SCREW 8/32X1/2 PHILPANMSBLK/ZI	10
2	940511	NUT LOCK 8/32 NYLON INSERT	16
3	940524	SCREW 8 X 3/4 PHILOVALTEKBLK Z	3
4	940552	IN LINE STRAINER	1
5	940558	BOTTLE 64OZ W/CAP 41996LW	2
6	940661	PENDANT BODY - DA1323190	1
7	940753(1)	TUBING ETHER POLYU 5/16ID /FT	2
8	941126	CONNECTOR FEMALE ELECT/BB2263	10
9	941178	PSX Y-ADAPTER	1
10	941363	SCREW 10-24 X .75 BHCS SS	8
11	941386	OVERLAY-PSX2500	1
12	941396W	BATTERY CABLE ASSM CVAC WARRAN	1
13	941399	LABEL-PSX2500 MINIATURE	1
14	40200742	35 PSI PUMP VITON - DDP2800-VG	2
15	40200909	OUTER CASE - PSX AND DFX	1
16	P940219	LATCH ANGLE BRKT ATF2000	3
17	P940547	PANEL-MOUNT BLK PSX2000 UP2005	1
18	P940677	PENDANT PANEL-BLACK-ATFMX	1
19	P941379	BRACKET-PENDANT HANGER BLACK	1
20	R940528	WASHER - NO 10 FLAT STEEL	8
21	R940553	HOSE BARB PLASTIC 1/2 FEMALE	1
22	R940554	ELBOW HOSE BARB PLASTIC 1/2 FE	1
23	R940555	IN LINE FUSE HOLDER	1
24	R940556	FUSE 15A BLADE	1
25	R940559	ELBOW 3/8 X 3/8 SINGLE BARB	2
26	R940571	FEMALE COUPLING USP 60465	1
27	R940572	MALE INSERT 3/8 USP 60467	1
28	R940663	SWITCH-MOMENTARY H1572ALBB	1
29	R940798	ELECTRICAL CONN 16-14 MALE	10

INFORMACIÓN CONFIDENCIAL Y DE MARCA
 LA INFORMACIÓN INCLUIDA EN ESTE DIBUJO PERTENECE EXCLUSIVAMENTE A <NOMBRE DE LA COMPAÑÍA>. QUEDA PROHIBIDA LA REPRODUCCIÓN TOTAL O PARCIAL SIN EL PREVIO CONSENTIMIENTO POR ESCRITO DE <NOMBRE DE LA COMPAÑÍA>.

SI NO SE INDICA LO CONTRARIO:		NOMBRE	FECHA	TÍTULO: POWER STEERING FLUID CHANGER		
LAS COTAS SE EXPRESAN EN PULGADAS		DIBUJADO			TAMAÑO N.º DE DIBUJO B	
TOLERANCIAS: FRACCIONAL ±		VERIFICADO				REV -
ANGULAR: MÁQUINA ± PLIEGUE ± 2 LUGARES DECIMALES ± 3 LUGARES DECIMALES ±		INGENIERÍA				
INTERPRETAR TOLERANCIA GEOMÉTRICA POR:		FABRICACIÓN				
MATERIAL		CALIDAD	COMENTARIOS:			
SEE BOM						
SIGUIENTE ENSAMBLAJE	UTILIZADO EN	ACABADO				
		-				
APLICACIÓN		NO CAMBIE LA ESCALA				

POWER STEERING FLUID CHANGER
PSX2500

ESCALA: 1:1 PESO: HOJA 2 DE 2

4

3

2

1