

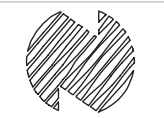
NOTES:

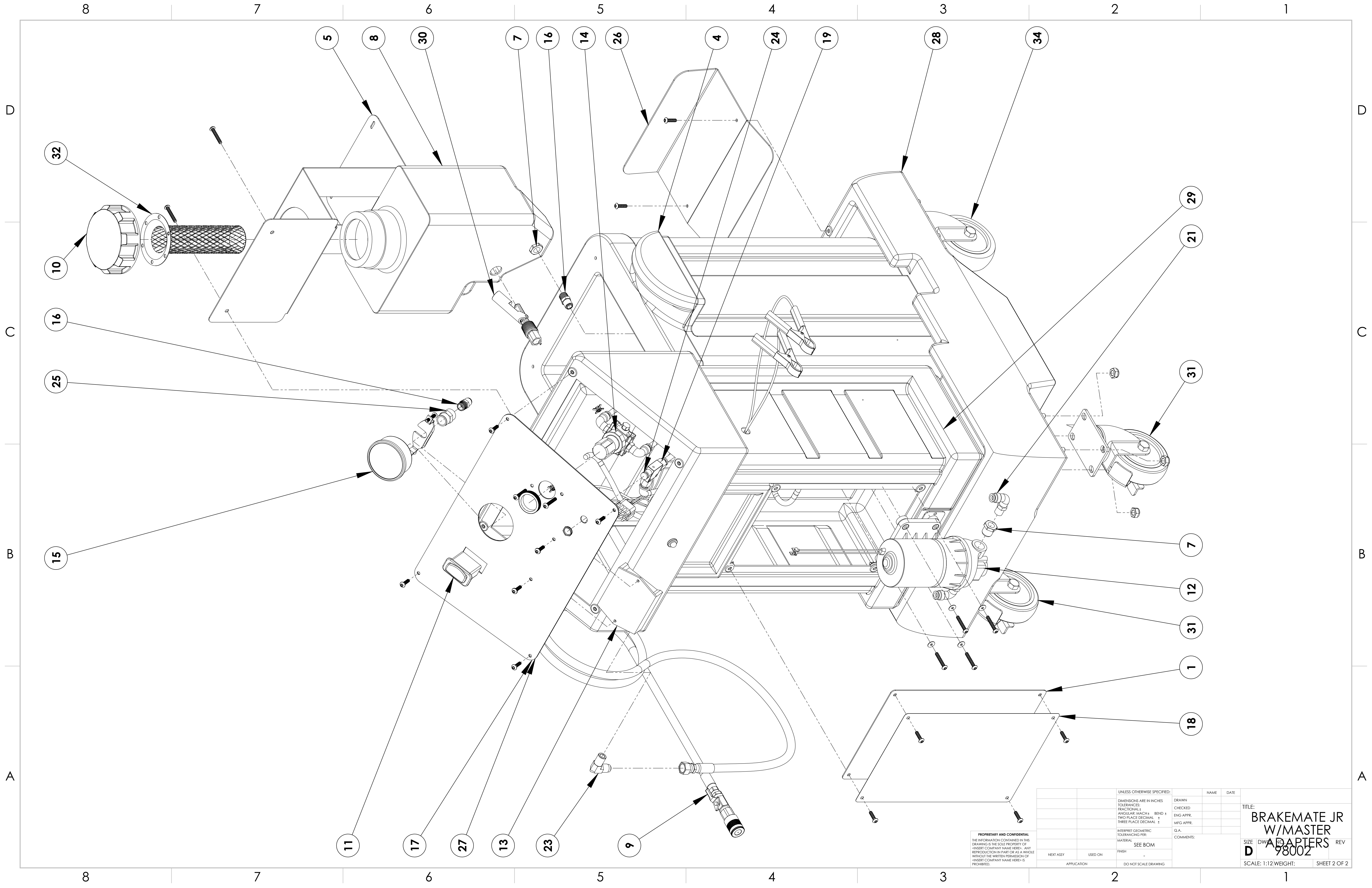
1. SURFACE AREA: 11881.453 SQ IN
2. FLAT AREA: SQ IN
3. ALL BENDS ARE 90° WITH RADII UNLESS OTHERWISE SPECIFIED.
4. EST WELD : X"
5. ROUTING NOTES:  
 OP -  
 OP -  
 OP -  
 OP -  
 OP -  
 OP -  
 OP -  
 OP -  
 OP -  
 OP -



ITEM NO.	PART NUMBER	DESCRIPTION	QTY.
1	940758	SERVICE PANEL - ECOAT ATF3-W	1
2	940760	CASTER SUP BRKT-ECOAT ATF3-W	2
3	940850	PLATE - SERIAL NUMBER - ATF3	1
4	941252	USED FLUID TANK-RED	1
5	941256	TANK BRACKET - BLACK - PSX3	1
6	941261	VINYL MAT - PSX3000F	1
7	941447	REDUCER-3,8MPT X 1,4FPT	3
8	941520	NEW FLUID TANK-NATURAL BRAKEMATE (AKC10447)	1
9	941540	YELLOW SERVICE HOSE BRAKEMATE	1
10	942113	TANK CAP	1
11	944037W	SWITCH ONLY-EVACUMAX CONTROL PANEL	1
12	945000	NEW FLUID PUMP BRAKEMATE JR	1
13	945001	CONTROL PACKAGE INVENTURE BMJR	1
14	945002	PRESSURE REGULATOR BRAKEMATEJR	1
15	945003	GAUGE-PANEL MOUNT 2.5 0-60PSI	1
16	945004	FITTING-5/16 PUSH EP SEALS	3
17	945007	OVERLAY-CONTROL PANEL BM JR	1
18	945008	OVERLAY-SERVICE PANEL BM JR	1
19	40200334	5/16 TUBE X 1/8 NPT	2
20	40200336	5/16 TUBE UNION TEE	3
21	40200338	5/16 TUBE X 1/4 NPT ELBOW	4
22	40200339	1/4 BRASS BULKHEAD FTG	1
23	40200340	3/8 JIC MALE X 1/4 NPT ELB 6 CTX-S	1
24	40200343	VALVE W/ SWITCH	1
25	945011	FITTING-1/4FPT X 1/4FPT STRAIT	1
26	P941538	ADAPTER BRACKET BLACK BRAKEMATE	1
27	P945009	CONTROL PANEL BLACK BRAKEMATJR	1
28	R940750	ATF/PSX CHASSIS-BLK	1
29	R940751 (ITW)	PSX CONSOLE - BLACK	1
30	R941251	LS-7 POLY LEVEL SWITCH 159236	1
31	R942118	CASTER 4 W/BRAKE ATFX	2
32	R942129	SCREEN BASKET AH6INBSKT	1
33	R942131	JACKNUT 10-24	2
34	R942137	CASTER 4 SWIVEL ATFX	2

REVISIONS					
REV.	DATE	DESCRIPTION	PPCO#	REV BY	APPROVED
8					
7					
6					
5					
4					
3					
2					
1					

UNLESS OTHERWISE SPECIFIED DIMENSIONS ARE IN INCHES GENERAL TOLERANCES: FRACTIONAL: ± 1/16 ANGULAR: ± 1 X.XX ± .03 X.XXX ± .015 INTERPRET GEOMETRIC TOLERANCING PER: ASME Y14.5	THE INFORMATION CONTAINED IN THIS DRAWING IS THE SOLE PROPERTY OF NORCO INDUSTRIES, INC. ANY REPRODUCTION IN PART OR AS A WHOLE WITHOUT THE WRITTEN PERMISSION OF NORCO INDUSTRIES, INC IS PROHIBITED.	DRAWN BY: AKG	DRAWN DATE:	 <b>NORCO INDUSTRIES</b>
		CHECKED BY:	CHECK DATE:	
		RLS APPR BY: --	RLS DATE: --	
		MASS: 26.283 lbm MATERIAL SPEC <b>SEE BOM</b>	SHEET SIZE: B SHEET 1 OF 2 FINISH -	
DESCRIPTION		PART NUMBER		REV
BRAKEMATE JR W/MASTER ADAPTERS		98002		-



PROPRIETARY AND CONFIDENTIAL  
 THE INFORMATION CONTAINED IN THIS  
 DRAWING IS THE SOLE PROPERTY OF  
 ©BERRY COMPANY NAME HERE. ANY  
 REPRODUCTION IN PART OR AS A WHOLE  
 WITHOUT THE WRITTEN PERMISSION OF  
 ©BERRY COMPANY NAME HERE IS  
 PROHIBITED.

UNLESS OTHERWISE SPECIFIED:		DRAWN	NAME	DATE
DIMENSIONS ARE IN INCHES		CHECKED		
TOLERANCES:		ENG APPR.		
FRACTIONAL ±		MFG APPR.		
ANGULAR ±		Q.A.		
BEND ±		COMMENTS:		
TWO PLACE DECIMAL ±				
THREE PLACE DECIMAL ±				
INTERPRET GEOMETRIC TOLERANCING PER:				
MATERIAL				
SEE BOM				
FINISH				
APPLICATION	DO NOT SCALE DRAWING			

TITLE:  
**BRAKEMATE JR  
 W/MASTER  
 ADAPTERS**  
 SIZE DWG NO. REV  
**D 98002**  
 SCALE: 1:12 WEIGHT: SHEET 2 OF 2